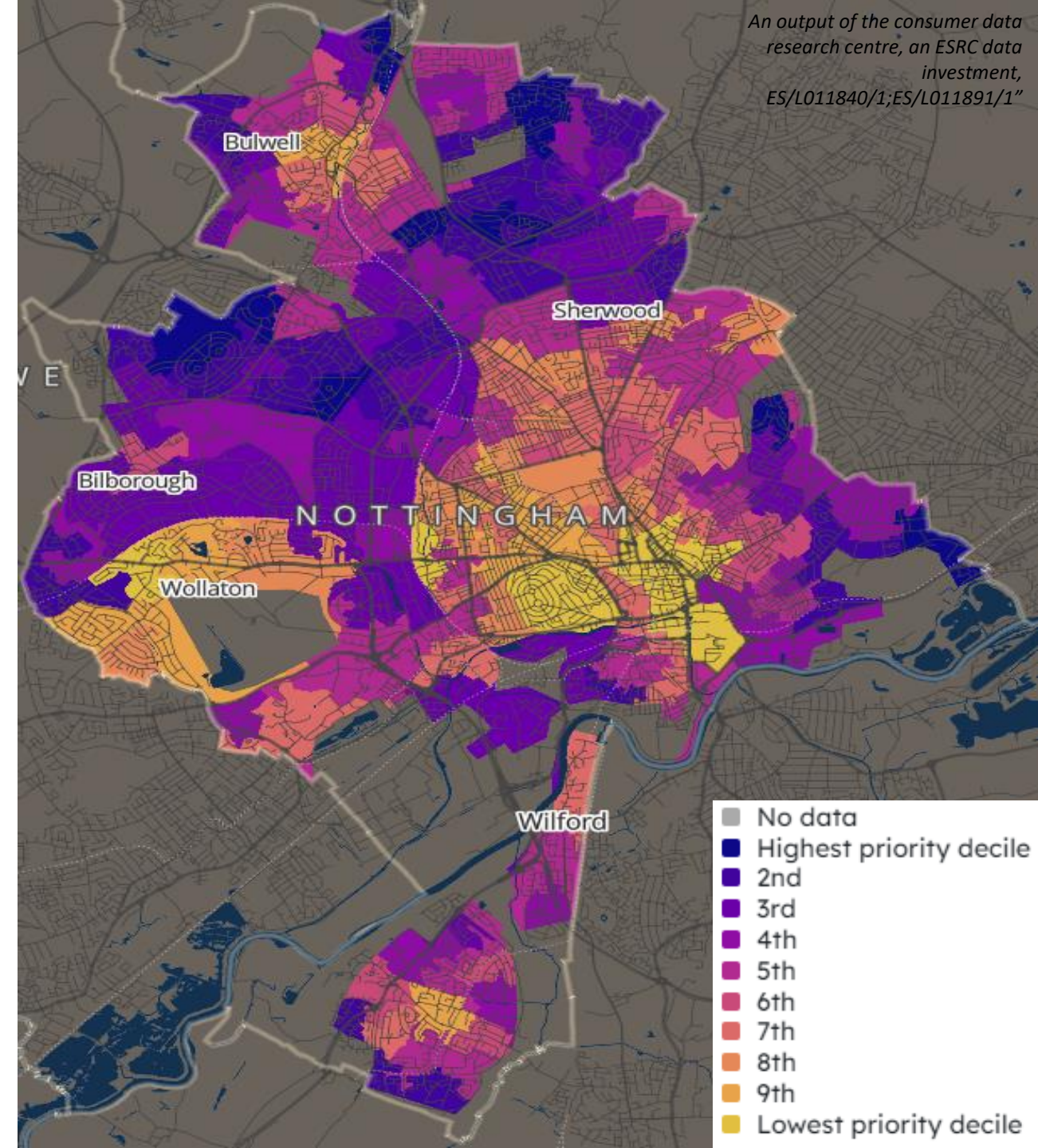


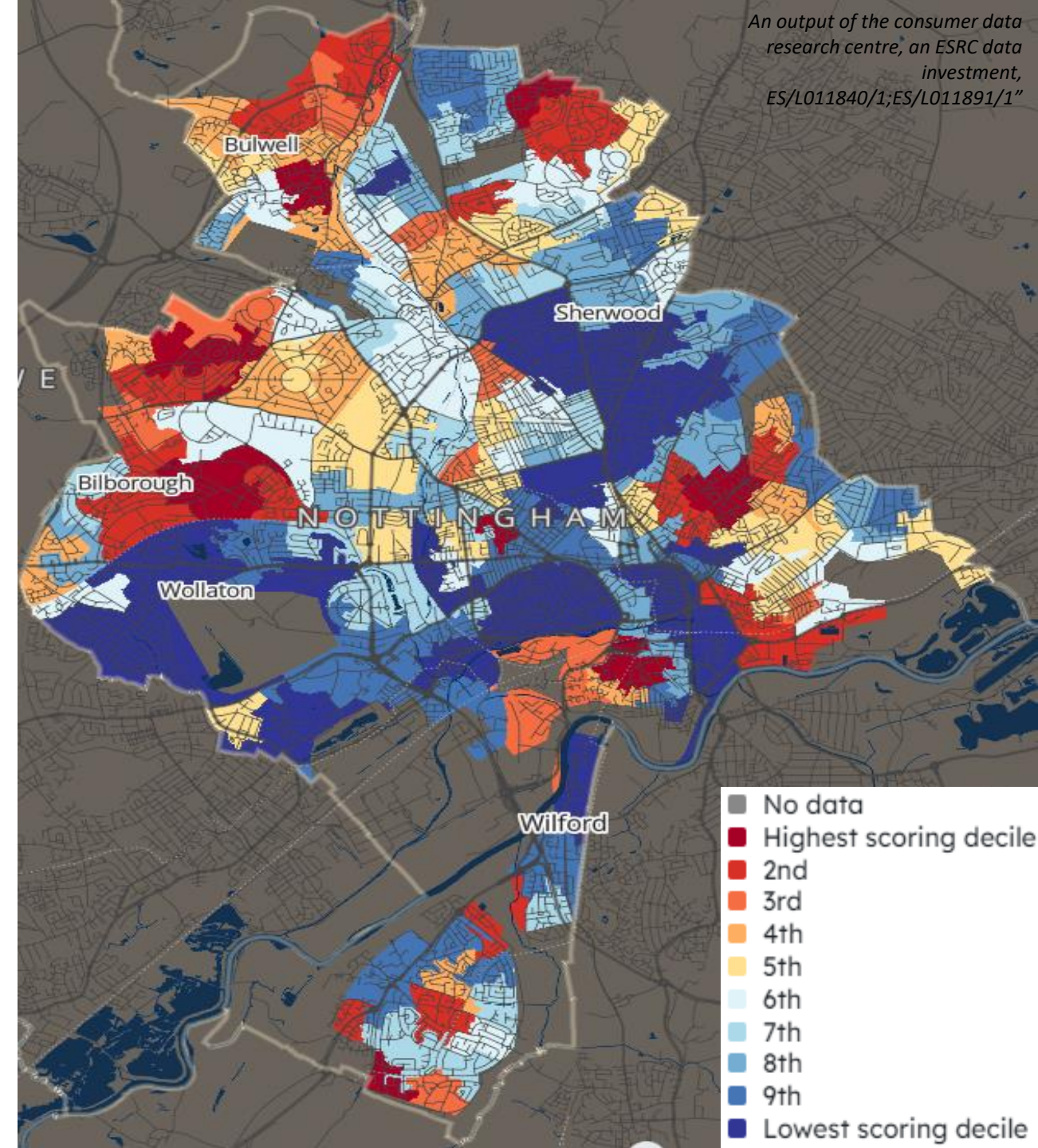
Priority Places for Food Index

- The Priority Places for Food Index from the Consumer Data Research Centre, have created a tool which identifies neighbourhoods that are most vulnerable to increases in the cost of living and which have a lack of accessibility to cheap, healthy, and sustainable sources of food.
- The areas of highest priority are in dark blue, these areas are within the following wards with the LSOA provided also;
 - Aspley - E01013826 & E01013818
 - Bulwell - E01013879
 - Bestwood - E01013851 & E01013849
 - Basford - E01013834 & E01013397
 - Dales - E01013915
 - Leen Valley - E01013823
 - Mapperley - E01013940



E-Food Desert Index

- Further research from Consumer Data Research Centre, helps measure the extent to which neighbourhoods exhibit characteristics associated with food deserts across four key drivers of groceries accessibility.
 - Proximity and density of grocery retail facilities
 - Transport and accessibility
 - Neighbourhood socio-economic and demographic characteristics
 - E-commerce availability and propensity
- The highest scoring areas on this map are in dark red (highest scoring decile) through to dark blue (lowest scoring decile). The highest scoring areas are in the following wards with the LSOA code provided;
 - Aspley - E01013817 & E01013818
 - Bestwood - E01013851
 - Bilborough - E01013861
 - Bulwell - E01013877
 - Clifton East - E01013908
 - St Ann's - E01013959 & E01013960
 - Meadows - E01013871
 - Radford – E01013948



References & data sources:



1. Consumer Data Research Centre, CDRC Map Maker (2022) - [CDRC Mapmaker: Priority Places for Food Index \(Overall decile\)](#)
2. Consumer Data Research Centre, CDRC Map Maker (2022) - [CDRC Mapmaker: E-Food Desert Index \(Decile \(England & Wales\)\)](#)